

# K-Series

## Transmitter

---

.....



## Catalog

|                                   |   |
|-----------------------------------|---|
| K-Series Features                 | 1 |
| Black Box                         | 2 |
| Automatic Channel Switching (ACS) | 3 |
| Multi-control System              | 3 |
| QI Wireless Charging Compatible   | 4 |
| Data Feedback                     | 4 |



|                |   |
|----------------|---|
| Zero-G Safety  | 5 |
| Dimensions     | 5 |
| Technical Data | 6 |
| Accessories    | 7 |
| Applications   | 9 |



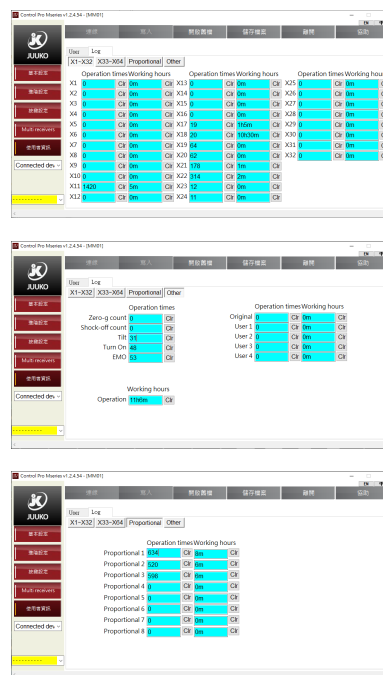


### K-Series Features

- Independent LEDs, indicate the status of the battery
- Activation of the transmitter is protected by an electronic key-code and an auto shut-off option which is programmable
- The system automatically change to another frequency in the presence of radio interference
- Eco power management system. Save on batteries
- It can receive and display via 4 LEDs signals coming from the receiver (relay action feedback)
- Mushrooms type EMO button
- Internal BootLoader, up firmware to the date by using computer
- Wireless pairing procedure using the keyboard pushbuttons
- Qi wireless charging pad is optional in New 2016 K plus series

### Black Box Track your crane or machine usage

With JUUKO Black Box function, you can always collect the usage data of both transmitter and receiver. This function is good for the hoist service and maintenance work, and also for those companies who provide lease or rent out service. It is more than simple to see the usage data of both Transmitter and Receiver just by connecting the transmitter to the JUUKO's "Control pro" configuration software.

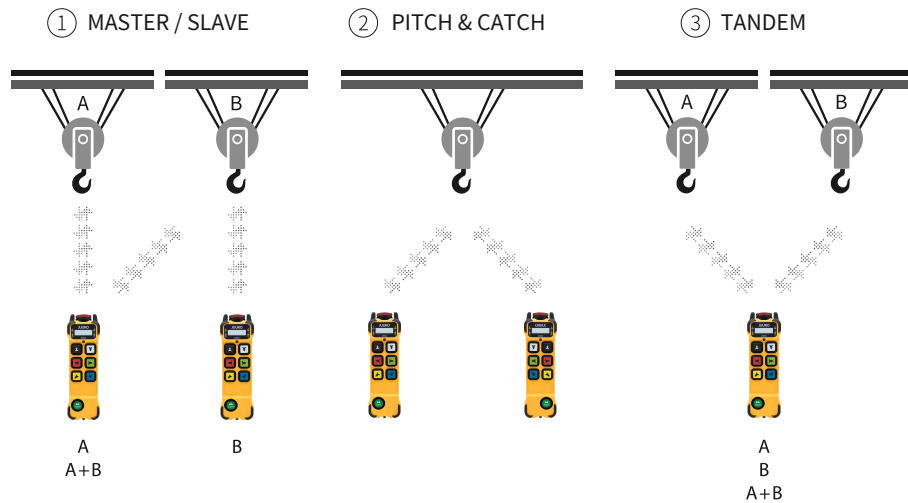


### Automatic Channel Switching (ACS)

A system comes standard with a primary working frequency and a secondary working frequency. Automatic Channel Switching (ACS) allows continuous operation free from interference for the user. When radio interference occurs during normal operation, the radio communication automatically switch to the the secondary frequency.

- Bi-directional
- Safe communication
- Uninterrupted radio link benefits smooth operation

### Multi-control System



### Qi Wireless Charging Compatible

Farewell, power cords

Frustrated with messy, often incompatible cables? Qi charging technology cuts the cord for your devices - finally, they are truly wireless.

Charged and ready to go

The leading wireless charging standard, Qi has been embraced by hundreds of leading manufacturers.

### Data Feedback

The "Data Feedback" function enables the visualization of status through 4 LEDs. These 4 LEDs are programmable to see the actual STATUS of each relay in receiver.



## Zero-G Safety

The zero-g safety function can prevent the uncontrolled output of commands in specific emergencies.

The G sensor can detect if the transmitter receives a hard impact, dropped or thrown.

These features can deactivate either the complete radio system or only the safety-relevant function relays.

## Dimensions



|           |           |           |           |           |           |
|-----------|-----------|-----------|-----------|-----------|-----------|
| K1200     | K1000     | K800      | K600      | K400      | K200      |
| 242*57*51 | 242*57*51 | 193*57*51 | 193*57*51 | 193*57*51 | 193*57*51 |
| 389g      | 389g      | 325g      | 325g      | 325g      | 325g      |

## Technical Data

### Frequency band

315 / 418 / 429 / 433 / 447 / 470 / 915 MHz / 2.4 GHz

### Channel space

12.5 kHz

### Number of available on/off command

max. 24 + Start and EMO

### Hamming distance

≥ 15

### Radio communication

bi-directional

### Frequency handling

Automatic and dynamic switching between 2 channels

### Power supply

LR6(AA)1.5V / NiMH(AA)1.2V x2

### Stop command response time

~ 50 ms

### Command response time

~ 50 ms

### Protection degree

IP65

### Operating and storage temperature

(-25°C)~(+55°C) / (-40°C)~(+85°C)

### Housing material

PA6 (GF30%)



### Accessories

Qi Charging Pad



K Series Hip Belt



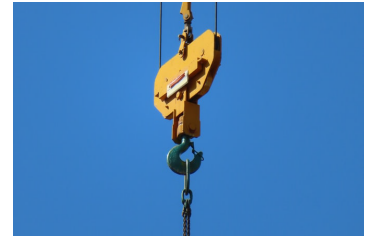
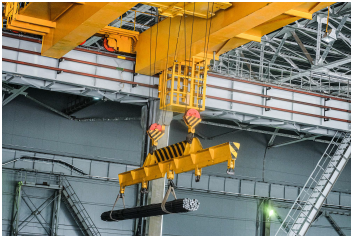
K Series Transparent Pouch

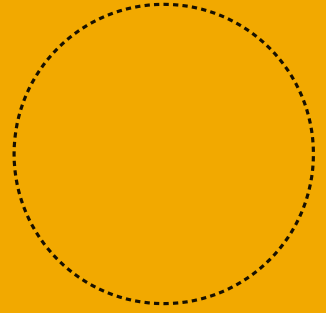


K Series Lanyard



# Applications





K